

Sync Console (NUC)

The content is transferred to the Podcatchers by the Sync software, which only runs on a Windows™ computer. Logfiles and statistical data are downloaded from the Podcatchers and sent to the Guide ID webservers.

Specifications

Type

Mini PC

Operating System

Windows 10

Processor

Intel Celeron processor J3455

Quad-Core / 1.50 GHz

Memory / Harddisk

Kingston KVR16LS11/4 (4 GB DDR3L)

Crucial SSD BX500 120GB

Power

DC power connector (12-19VDC) 65 Watt (01)

Audio (back channel + front channel)

Front: 7.1 digital dual array microphones (02)

Headphone/Microphone Jack (03)

Back: Combo speaker/TOSLINK optical audio jack (03)

Graphics

VGA port (HDB15) (04)

HDMI 2.0 display port (05)

Communication

Consumer Infrared Rx Sensor (07)

Connection

Integrated Wireless (Intel® Wireless-AC 3168)

Integrated Bluetooth (Bluetooth 4.2)

Integrated LAN (Gigabit) (08)

USB ports

Front: 2x USB 3.0 ports, one charging (Yellow) (09)

Back: 2x USB 3.0 ports (10)

Expansion Options

SD card slot (11)

Physical characteristics

Dimensions

101,6 x 51 x 101,6 mm (W x H x D)

3.98 x 2.01 x 3.98" (W x H x D)

Weight

650 gr. / 22.93 oz

Installation & use

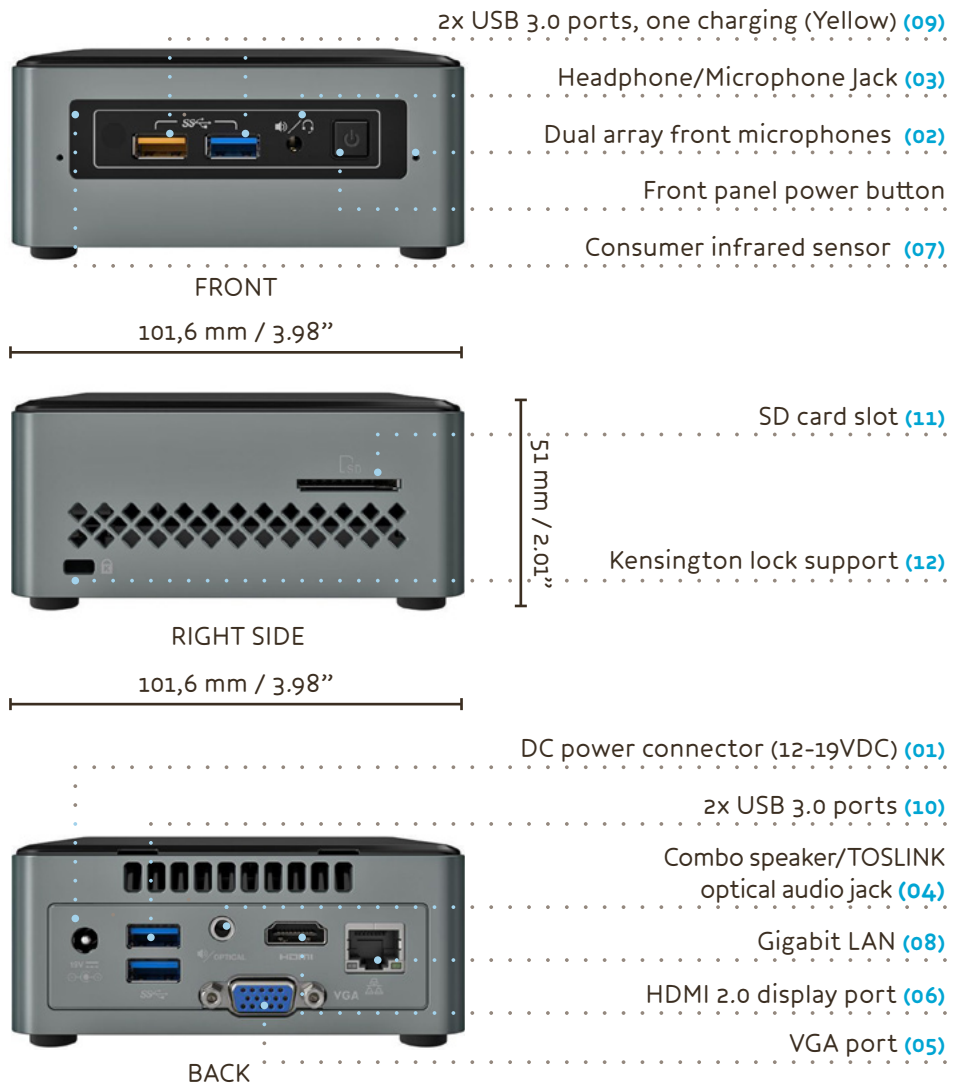
Mounting (see page 02)

Status Sync Computer

Broadband, always-on, wired internet connection. The computer needs to be powered on and 24/7 online.

Operate in a ventilated environment.

Do not use the Sync Console for other tasks!



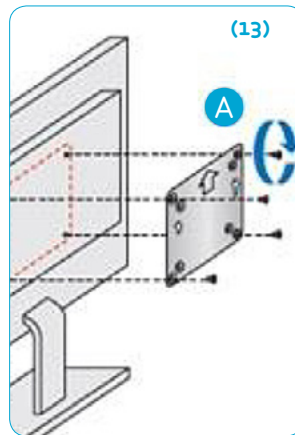
Installation & use

Mounting

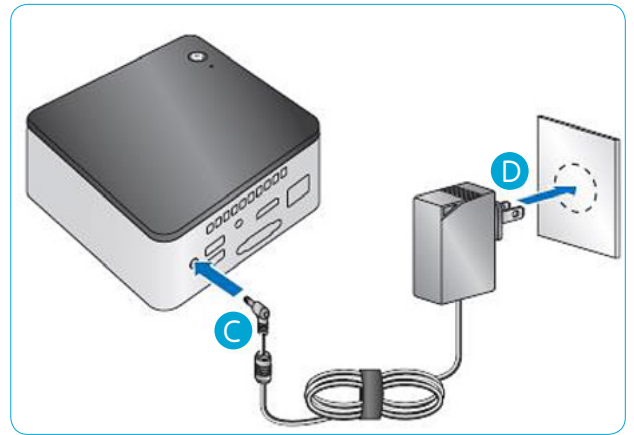
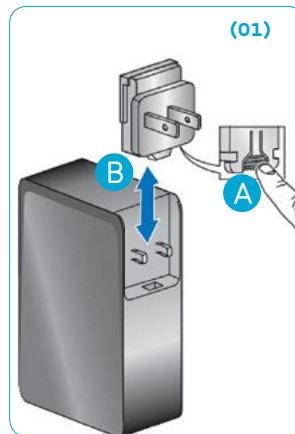
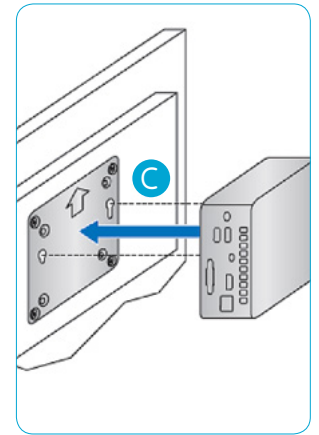
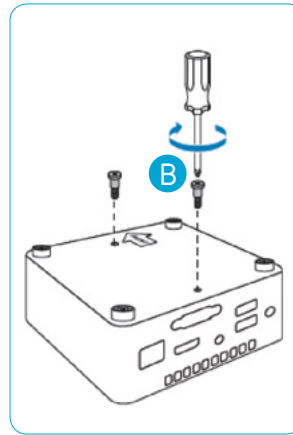
Mounting can be done by using the VESA Bracket (13) and secured by using the Kensington lock support (12)

USB connection

- a| Do not use USB cables longer than 1.8 m / 70".
- b| Do not use extension USB cables.
- c| Use USB Hubs without an external power supply.
- d| Do not connect a USB-hub on another USB-hub.
- e| Maximum of 20 Docks per Sync Console.



VESA Bracket mounting



Power plug, attachments and mounting

